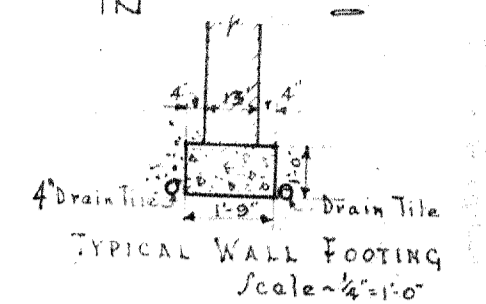
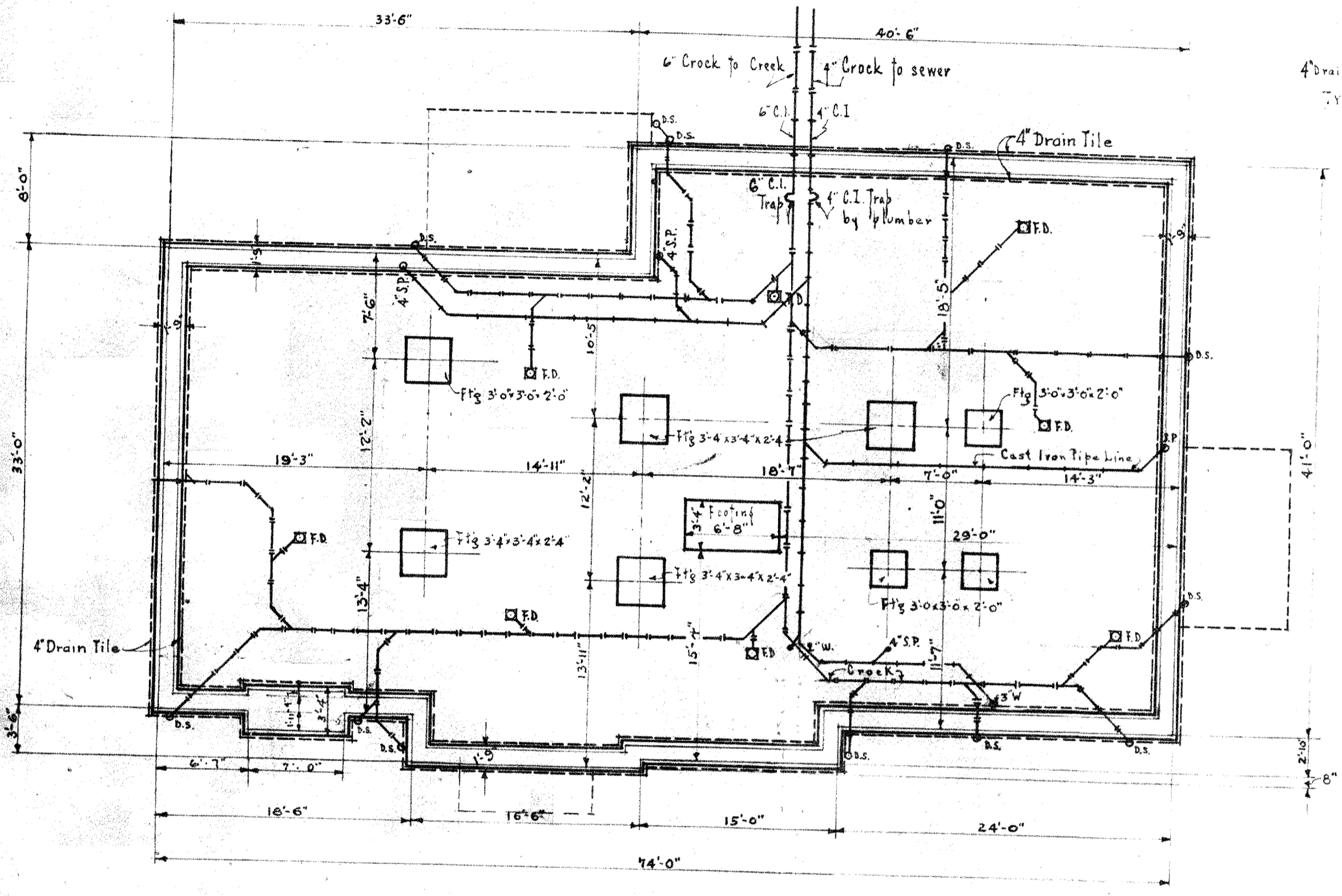


- DINING - ROOM - DETAILS - IN

TEACHERS' - HOME -

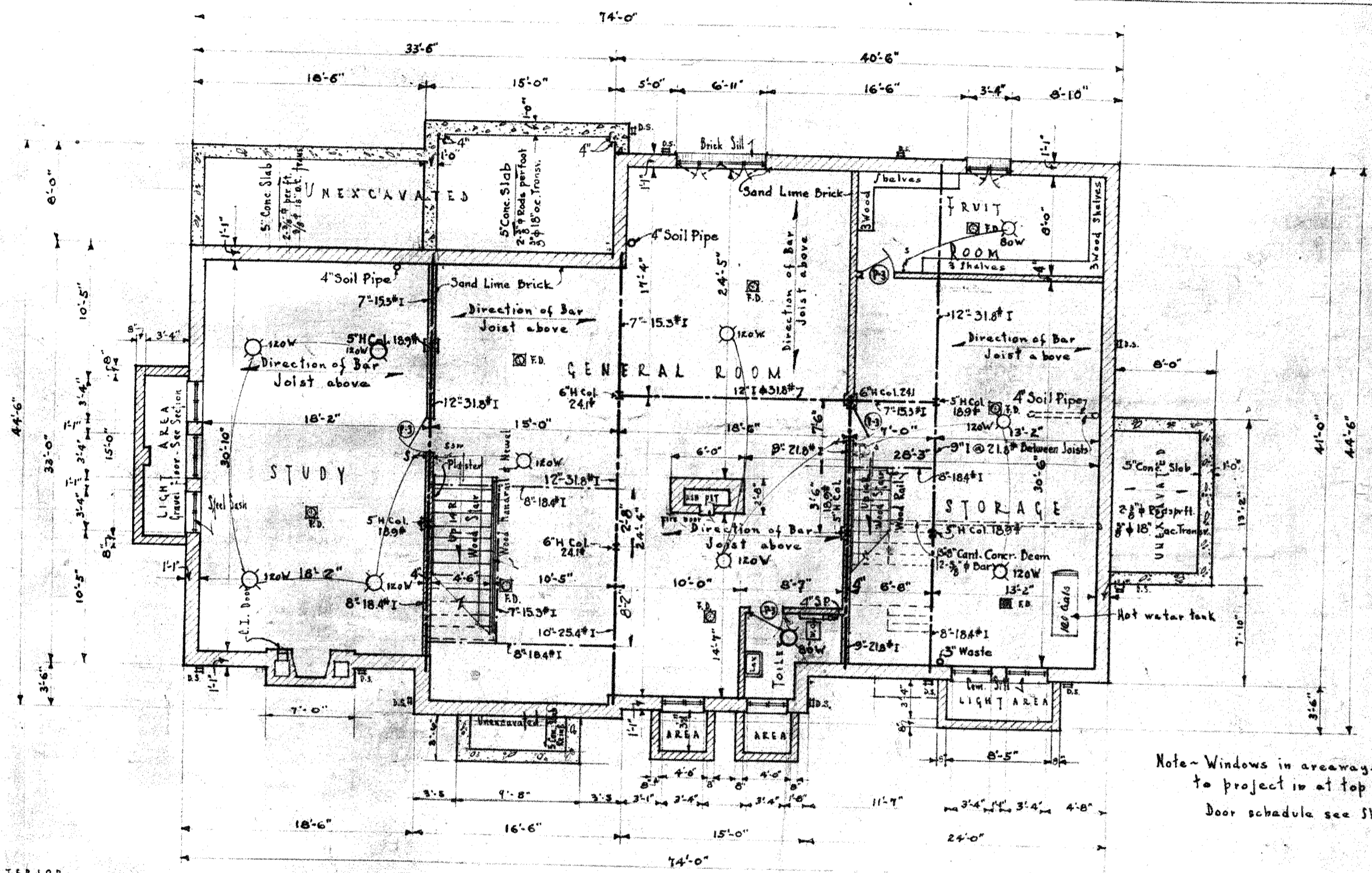
SCALE 1/4" = 1'-0"



- SYMBOLS**
- CEILING OUTLET
 - BRACKET OUTLET
 - BASE PLUG
 - WALL PLUG
 - SWITCH
 - 3-WAY SWITCH
 - AUTOMATIC DOOR SWITCH
 - ANNUNCIATOR
 - DOOR BELL
 - FLOOR BELL

DRAINAGE & FOOTING PLAN
SCALE - 1/8" = 1'-0"

- NOTES:**
- 1" TILE DRAINS ON BOTH SIDES OF ALL EXTERIOR BASEMENT WALLS.
 - NO CAST IRON PIPE OR CROCK UNDER GROUND TO BE LESS THAN 4'
 - CAST IRON TRAPS BY PLUMBER
 - ALL BASEMENT PARTITIONS TO BE 4" SAND LIME BRICK
 - ENTIRE BASEMENT FLOOR TO BE 4" CONC. ON 4" CINDER FILL.
 - FURR AND PLASTER AROUND ALL EXPOSED BASEMENT BEAMS.
 - ALL H COLUMN GO TO SECOND FLOOR.



BASEMENT PLAN
SCALE - 1/8" = 1'-0"
FIRST FLOOR FRAMING

- NOTE:**
- LINTELS IN EXTERIOR BRICK WALLS
 - IN OPENINGS UP TO 4'-0" USE 1-4x3x3/8 L & 1-6x4x3/8 L SLV.
 - IN OPENINGS OVER 4'-0" UP TO 7'-0" USE 1-6x4x3/8 L & 1-6x6x3/8 L LLY. } UNLESS OTHERWISE NOTED. } FOR RESIDENCES AND DORMITORY
 - IN BASEMENT PARTITIONS USE 1-4x3x3/8 L SLV.
 - FIRST & SECOND FLOOR FRAMING TO BE OF BAR JOISTS. DEPTHS NOT TO EXCEED 10". SPACING OF JOISTS NOT MORE THAN TO CARRY A LIVE LOAD OF 50# PER SQ. FT. PLUS DEAD LOAD. SPACING NOT TO EXCEED 24" C.T.O.C. DIRECTIONS AS SHOWN.
 - USE STANDARD BEARING PLATES FOR WALL BEAMS.

Note: For Tank Connections See SHT #5
For Pressure Reducing Val See SHT #5

Note - Windows in arcways to project in at top
Door schedule see Sht #9

DATE 6/6/27	FOOTING AND BASEMENT PLANS	SHT. NO. 2
REVISIONS A 1/22/27 B	- SUPERINTENDENT'S HOME - FOR THE WAYNE COUNTY HOME FOR THE FEEBLE MIMDED NORTHVILLE MICHIGAN	JOB NO. 812
	AARON R. GOULD & SON ARCHITECT AND ENGINEER 602 EMPIRE BLDG DETROIT MICH.	FILE NO. 1453